

# USER GUIDE FOR ELECTRONIC SERVICE MANUALS

This document explains the operation of the Electronic Service Manuals module within PASS. The following steps outline the basic flow of the system including screen captures for reference purposes.

1. When you click on the “**Electronic Service Manuals**” link within PASS, another browser window will open showing the following screen:



2. There are 2 methods to search for documents:

- a. The Direct Search method allows you to enter a specific Model Number. You can enter as many characters as you want but ensure that the “dash” character is entered and in the correct location. For example, you can enter DVD-RV31 and click the “Search” button, which will return a list of possible models from which to choose. However, if you enter DV-DRV31 or DVDRV31, you will receive an error that the model does not exist.
- b. The Optional Search method allows you to first choose a Product Group from the drop-down list. After choosing the Product Group, the Product Category drop-down will appear as shown below.



- Whether you choose the “Direct Search” method as described in Step 2a, or the “Optional Search” method as described in Step 2b, a choice of models will then appear:

The screenshot shows the 'Technical Literature' search interface. On the left is a blue sidebar with 'MENU' and 'Main Menu' links. The main area has a blue header with 'Technical Literature' and a 'VISITORS 00153' counter. Below the header are two search sections: 'Direct Search' with a text input and 'Search' button, and 'Optional Search' with 'Product Group' (AV\_Products) and 'Product Category' (DVD\_Player) dropdowns. A 'Reset' button is at the bottom right. The 'Search Results (Model Numbers)' section shows a dropdown menu with 'DMR-E20' selected and '78 Model(s) found.' text. A 'Submit' button is at the bottom right.

- Select the model of your choice and click the “Submit” button. The following screen will appear showing the available documents for that model (Contents).

The screenshot shows the 'Technical Literature' search interface after selecting a model. The search results section now shows 'DVD-FV31EN' selected in the dropdown and '1 Model(s) found.' text. Below this is a 'Contents' section with two radio button options: 'Service Manual' (selected) and 'Supplement Service Manual'. A 'Submit' button is at the bottom right.

- In this example, a Service Manual and a Supplement Service Manual exist. Select the document type and click “Submit” to retrieve the document.
- The next screen that appears allows you to either view the document using your browser or to download the contents of the manual to your PC. In some cases, the viewing option may not be available. **This does not indicate an error.**

## Model : DVD-RV31EN

- [IE/Netscape Viewing](#)
- [View](#)
- [Download](#)

7. To view the document, simply click on “IE/Netscape Viewing”. This will launch another browser window with a Table of Contents. You are now viewing the contents of the manual. Certain sections of the manual are presented in “PDF” format so your PC will need Acrobat Reader installed to view these items. Within the PDF files, there may be links to other files. There are color-coded navigation links in all Schematic, PCB, and Block diagrams to move you easily between each of the three.
  - a. **Pink** boxes link a specific Schematic section to its corresponding Block Diagram
  - b. **Yellow** boxes link a specific Schematic section to its corresponding PCB Diagram.
  - c. **Blue** boxes link a specific PCB section to its corresponding Schematic Diagram.
  - d. **Green** boxes link to the section called out within the box, or to the adjoining page or section when blank.
8. To download the document, follow these steps:
  - a. Click the “Download” link, which presents the following screen:

## Model : DVD-RV31EN

Download All Contents ( 3,518,106 Byte )

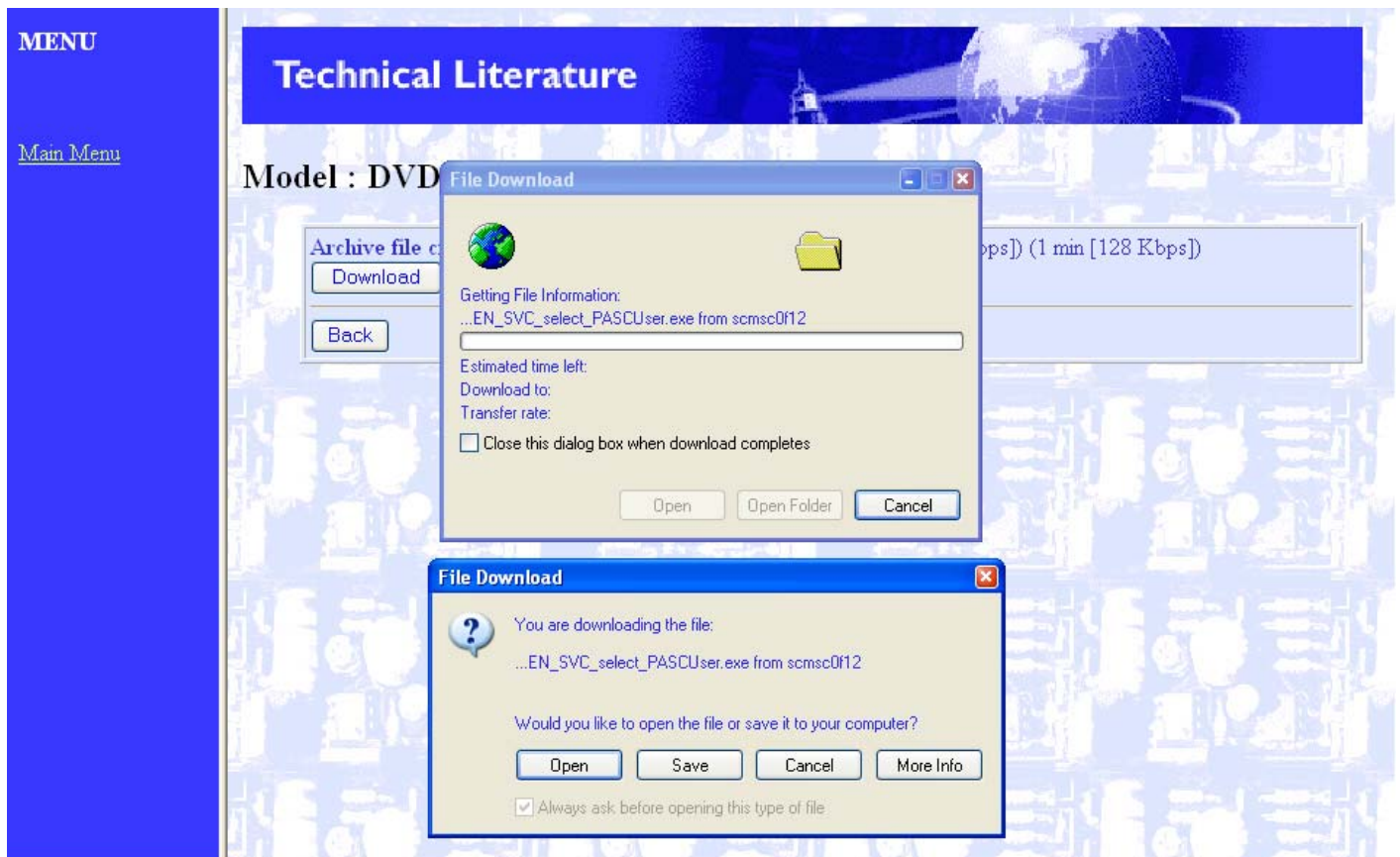
## Download Specific sections of: Service Manual

- Front cover and list of contents**
- 1 SAFETY PRECAUTIONS
- 2 PREVENTION OF ELECTRO STATIC DISCHARGE (ESD) TO ELECTROSTATICALLY SENSITIVE (ES) DEVICES
- 3 Precaution of Laser Diode
- 4 General Description
- 5 Disassembling the Casing and Checking P.C.B.s
- 6 PREVENTION OF STATIC ELECTRICITY DISCHARGE
- 7 OPTICAL PICKUP SELF-DIAGNOSIS AND REPLACEMENT PROCEDURE
- 8 SELF-DIAGNOSIS FUNCTION AND SERVICE MODES
- 9 ASSEMBLING AND DISASSEMBLING THE MECHANISM UNIT
- 10 ADJUSTMENT PROCEDURES
- 11 Electrical Confirmation
- 12 Abbreviations
- 13 Voltage Chart
- 14 BLOCK DIAGRAM
- 14.1 OVERALL BLOCK DIAGRAM

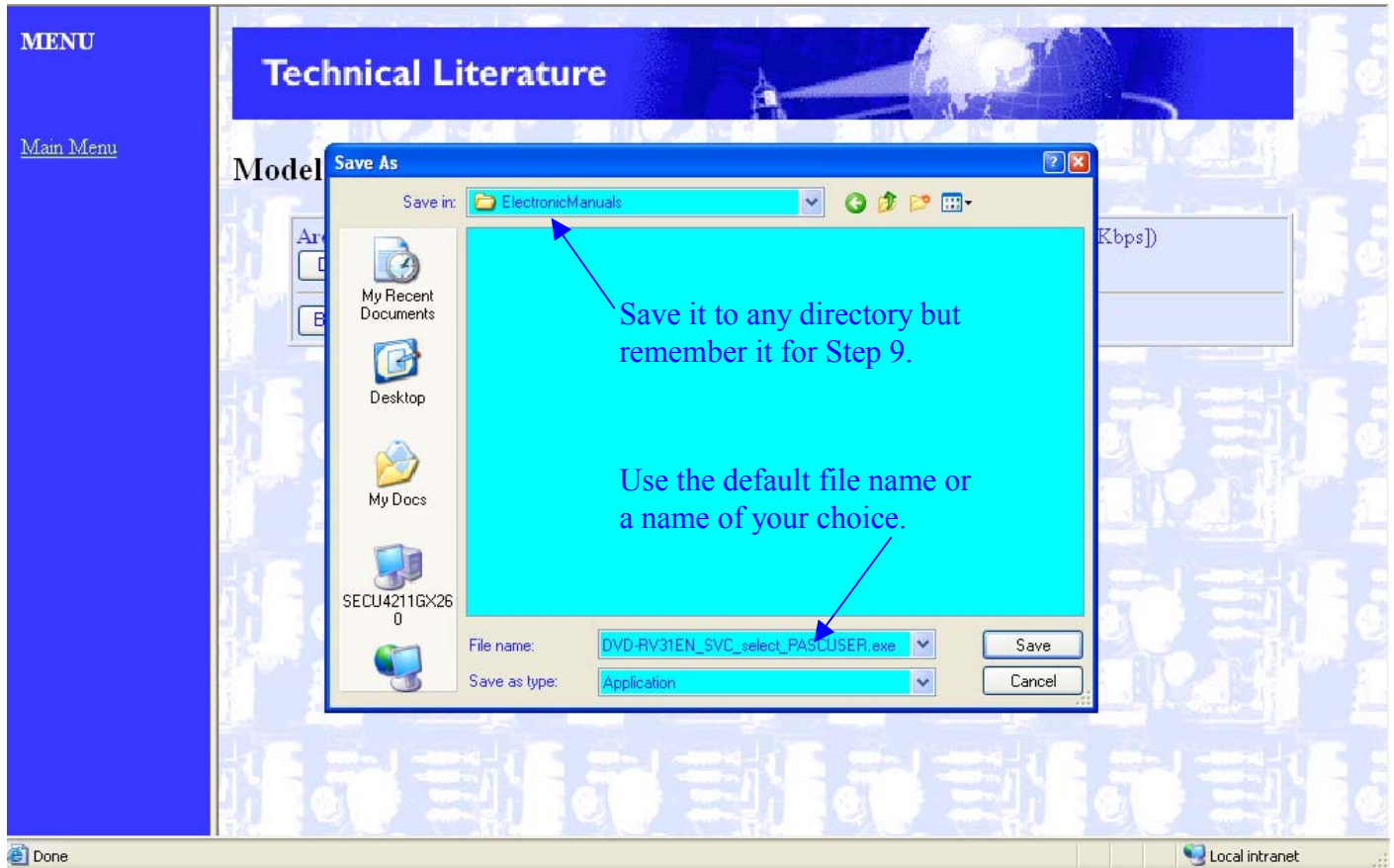
- b. All documents have a choice to “Download All Contents” by clicking on its “Submit” button. Certain documents, such as the one shown above, will also have a “Download Specific sections of:” option, which allows you to save portions of the document to your computer. Just select the sections you are interested in, and click the “Submit” button at the bottom of the page. If you choose to download certain sections, always include the first section in red “**Front cover and list of contents**”. This will ensure that the table of contents is present.
- c. Whichever option you choose (Download All or Specific Sections), you will see the following screen after submitting your request:



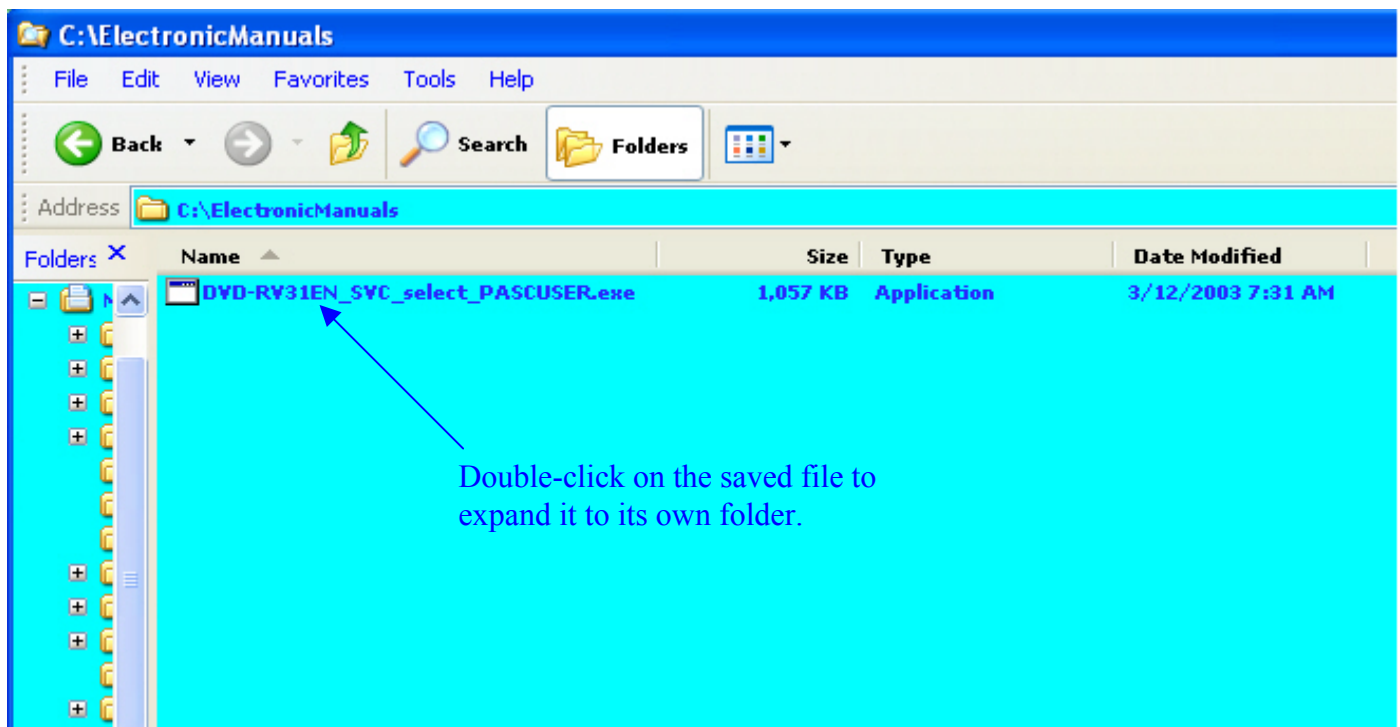
- d. This indicates that a compressed file (Archive) will be created with the stated file size. When you click on the “Download” button, you will see a dialog box similar to the one below. **Note: the type of dialog box will vary depending upon your operating system.**



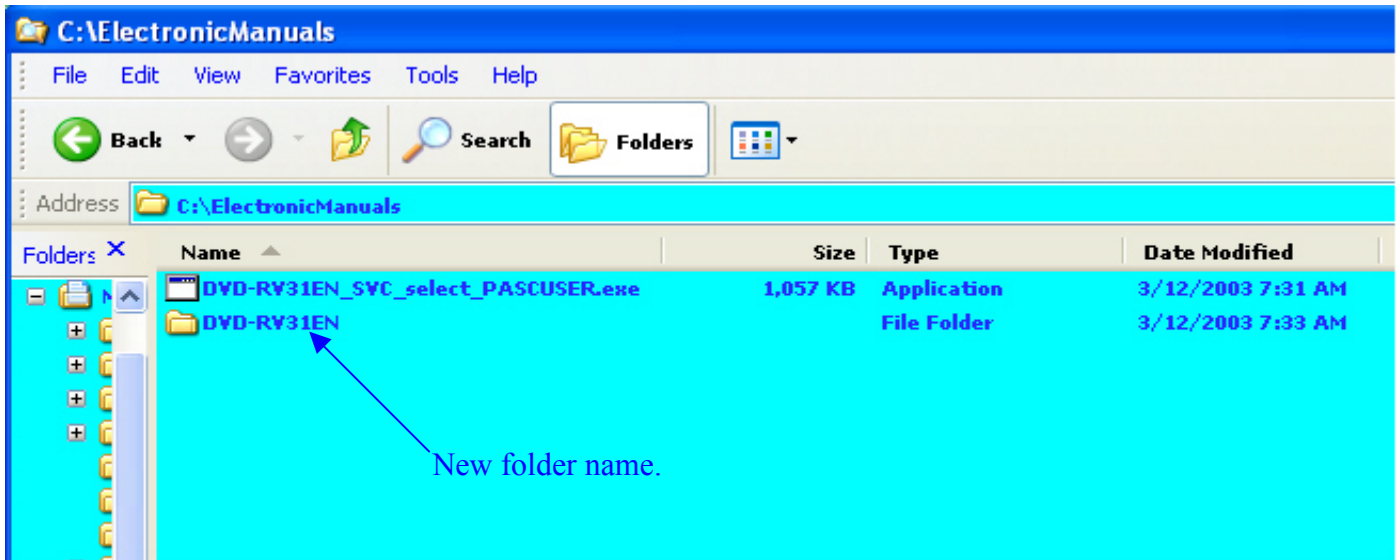
- e. Click on the “Save” button (**DO NOT CLICK OPEN**) and then specify a directory where you want the document stored (remember this directory for Step 9). This will save a file with an “exe” extension in that directory as shown below.



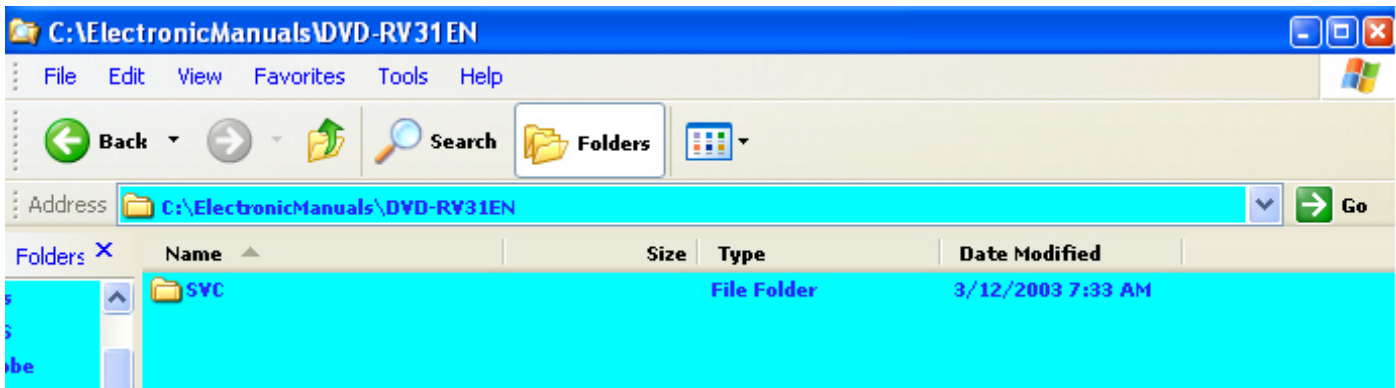
9. To view the document after you have saved it, run the file (double-click on it from Windows Explorer) that was created in step 8e.



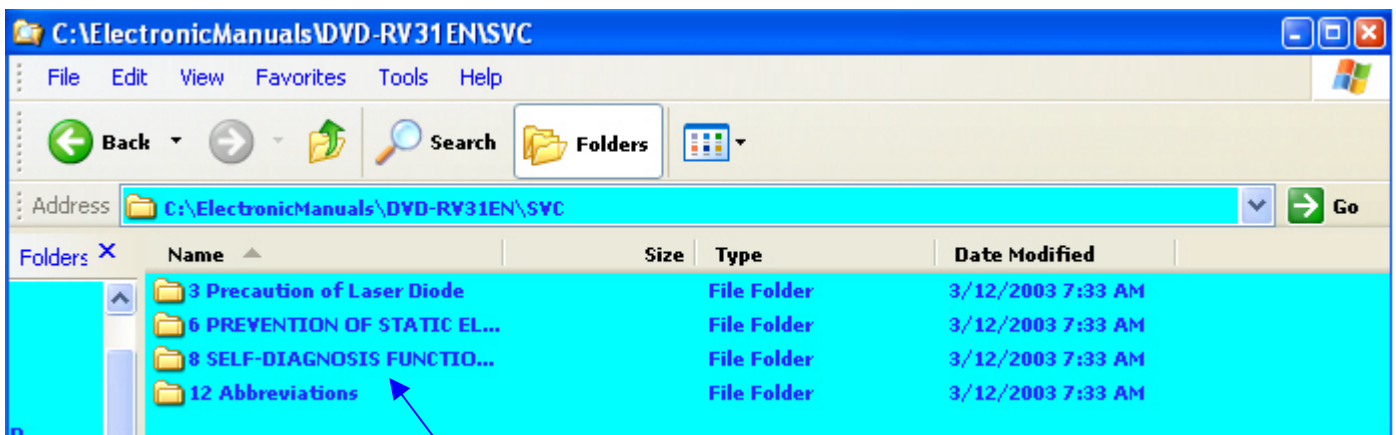
This will expand the file into its own folder with the model number as the folder name.



Open that folder to reveal the “SVC” folder.

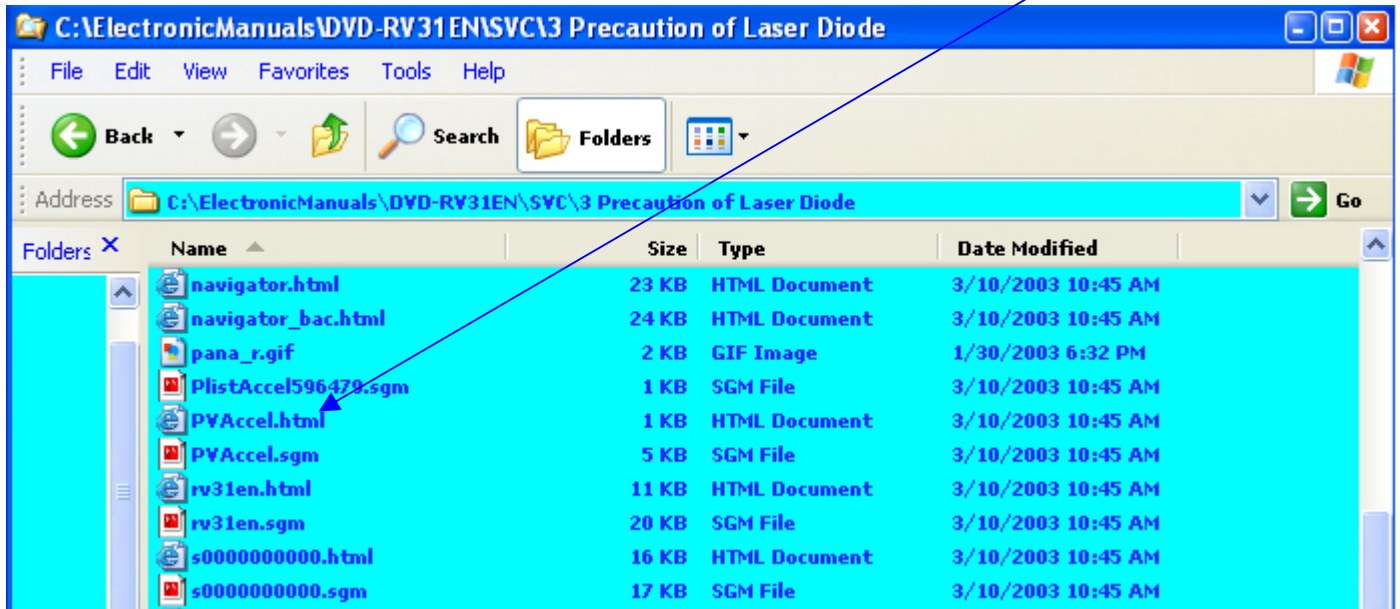


Open the “SVC” folder to display the subfolders that are named with the sections that were saved.

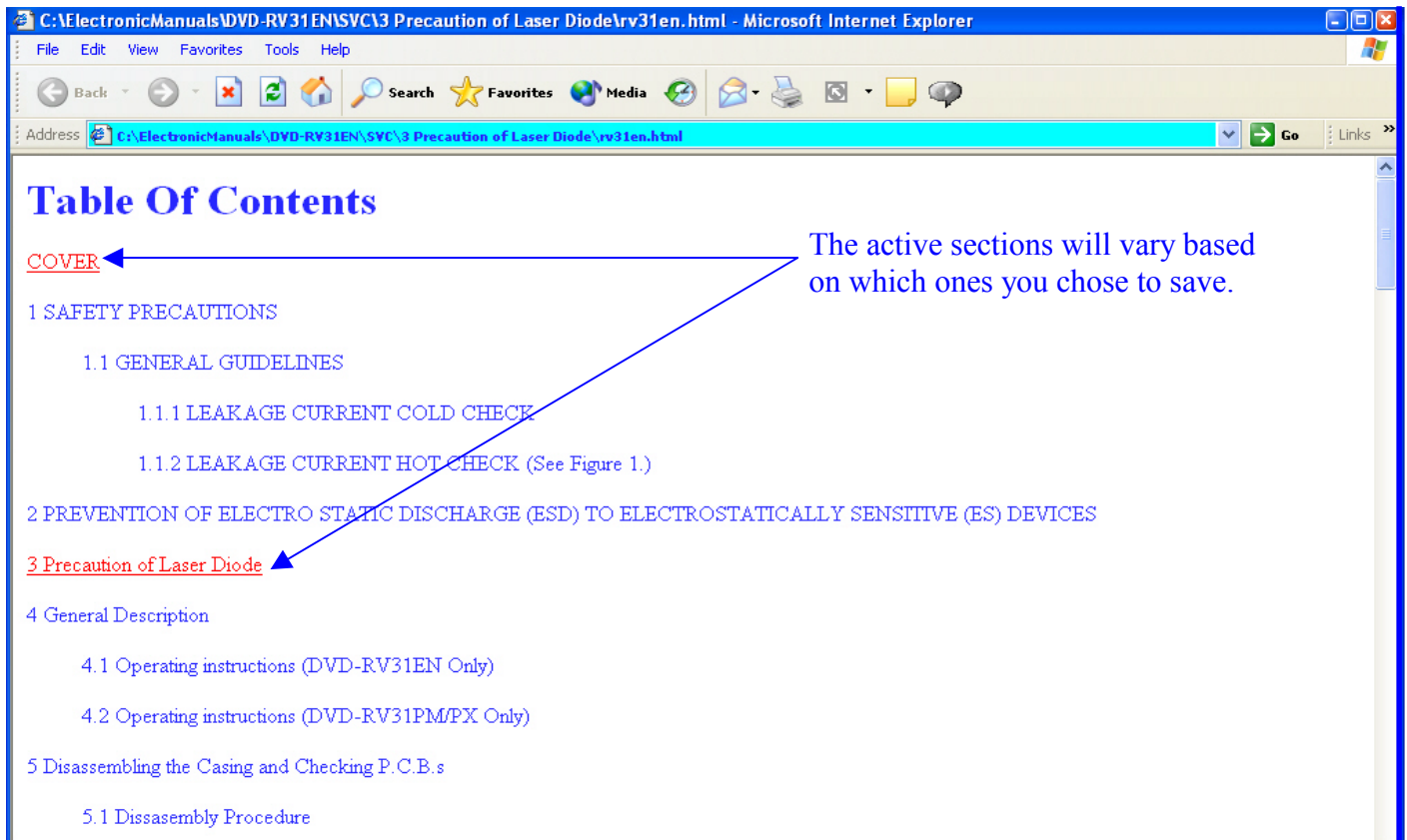


This is an example of the subfolders that are created based on the sections you chose to save in Step 8b. **Remember, your folders will most likely have different names based on the model number and the sections you saved.** The object now is to open the Table of Contents file with your browser.

Open the first subfolder under “SVC” and look for a file named “PVAccel.html”.



Each subfolder that is created should have its own “PVAccel.html” file. When you double click on the correct file, your browser should open and provide the table of contents. You can then navigate your way through the document as if you were viewing it online.



10. If you have any questions related to the operation of this system, please contact your local Panasonic Field Representative.