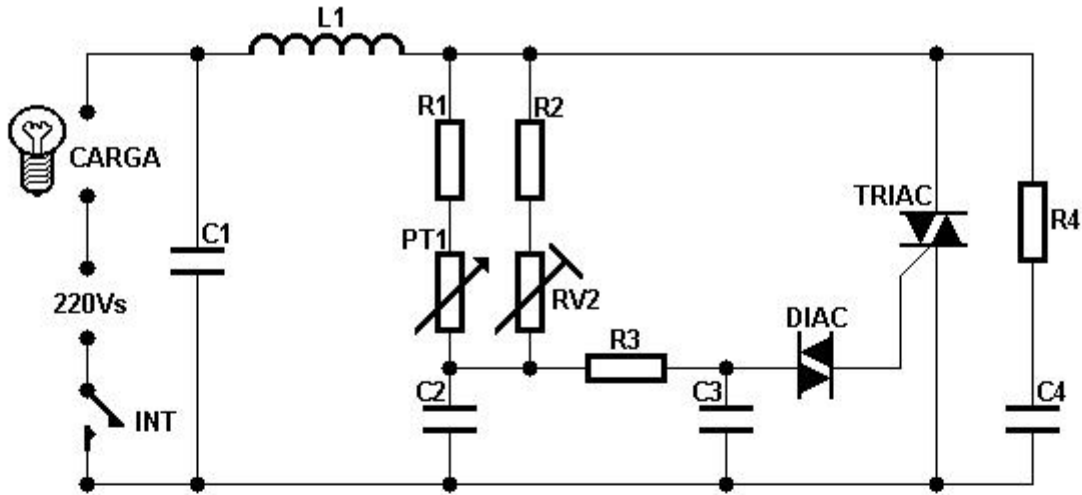


## REGULADOR DE CORRIENTE

- Esquema eléctrico + Topográfico.

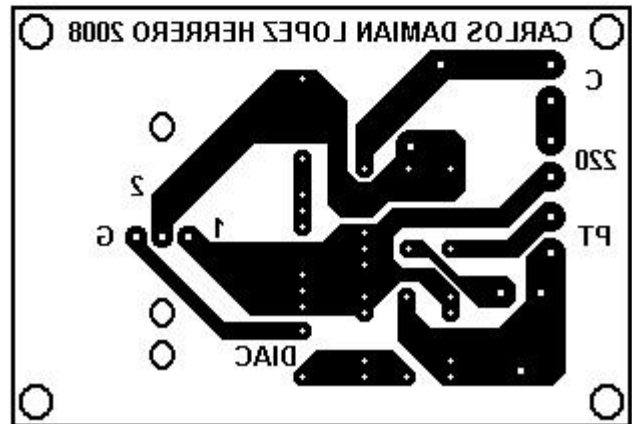
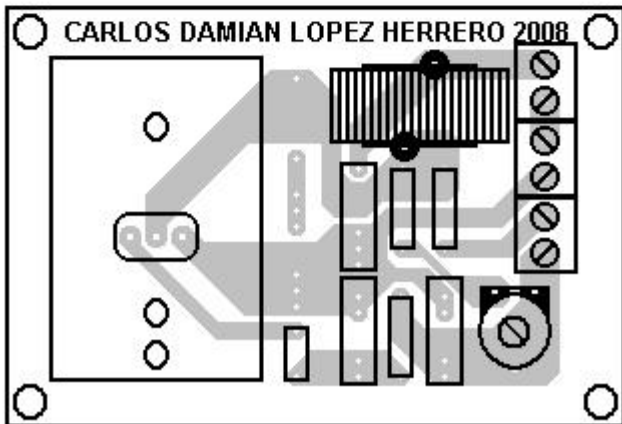
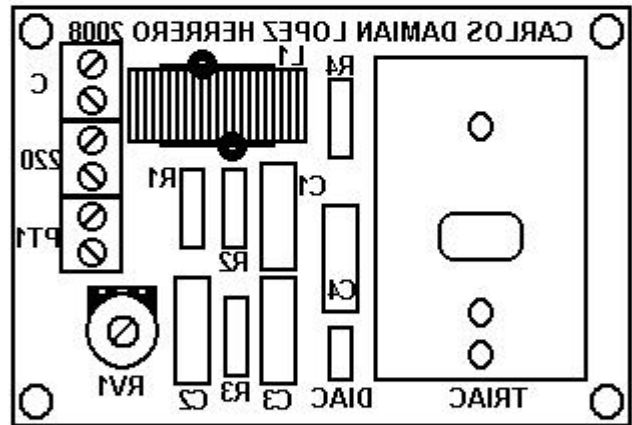
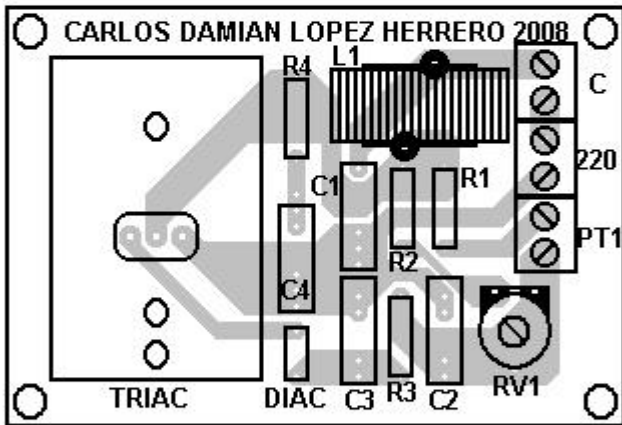


R1 = 4K7  
R2 = 4K7  
R3 = 10K  
R4 = 68Ω

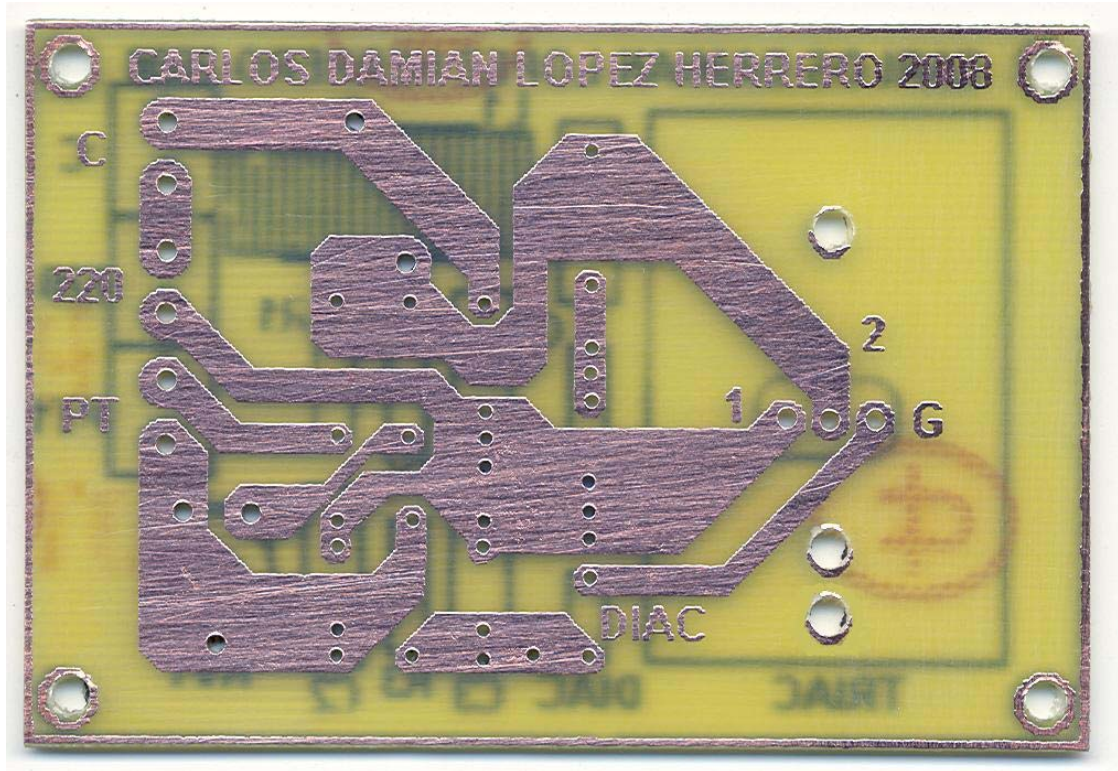
C1 = 22nF 630Vs  
C2 = 47nF 400Vs  
C3 = 47nF 400Vs  
C4 = 38nF 600Vs

RV1 = 3.3 MΩ  
PT1 = 1MΩ

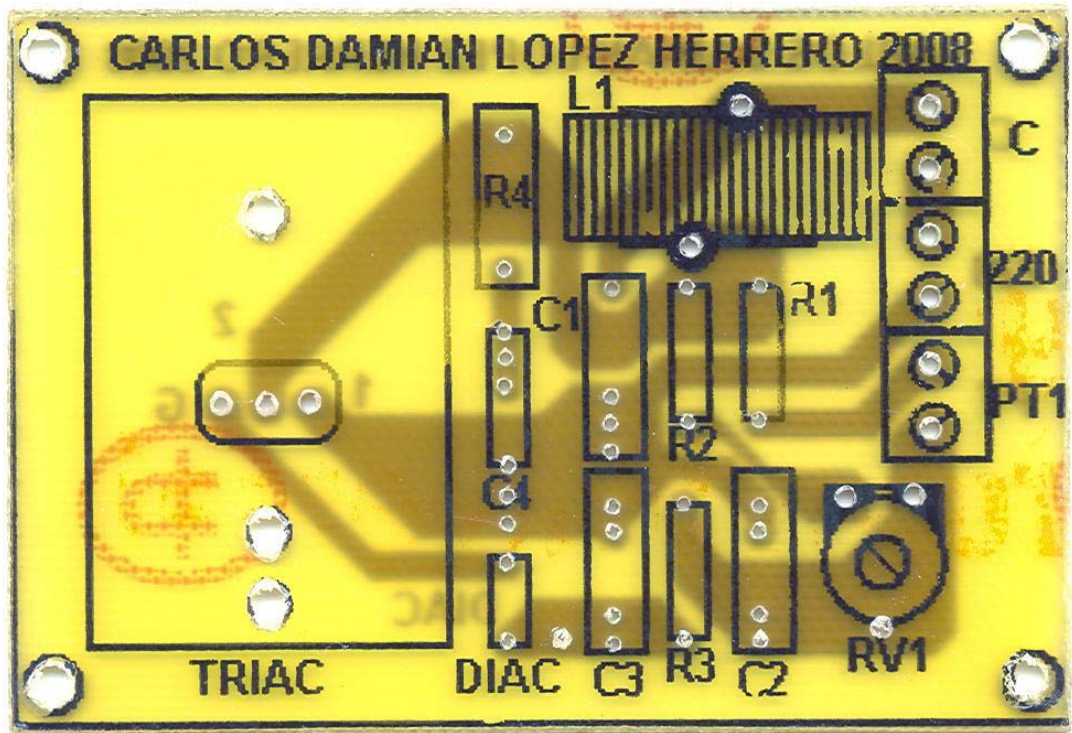
DIAC  
TRIAC = BT139  
L1 = Choque 16Amp



- Pistas



- Componentes



- Soldaduras.



- Terminado componentes.



CARLOS DAMIAN LOPEZ HERRERO